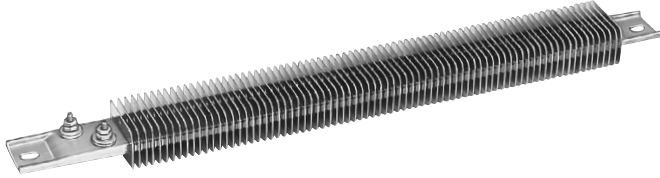


Standard (Non-Stock) and Stock Sizes and Ratings



Stock Items Are Shown In **RED**

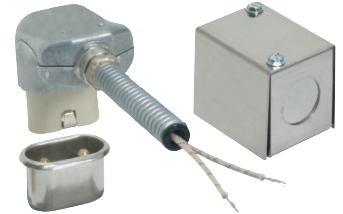
Length in mm	Wattage	Watt Density		Part Number	
		W/in ²	W/cm ²	120V	240V
8½ 215.9	250	18	3	CSF00252	
10½ 266.7	350	17	3		CSF00039
10½ 266.7	500	24	4	CSF00129	CSF00130
10½ 266.7	600	33	5	CSF00042	
10½ 266.7	725	40	6	CSF00044	CSF00045
10½ 266.7	850	47	7	CSF00209	
12 304.8	500	19	3	CSF00047	
12 304.8	900	34	5	CSF00053	CSF00054
14 355.6	750	23	3	CSF00056	CSF00057
14 355.6	1100	36	6	CSF00060	CSF00061
15¼ 387.4	1000	27	4	CSF00065	
15¼ 387.4	1250	33	5	CSF00143	CSF00067
17⅞ 454.0	1000	23	3	CSF00071	
17⅞ 454.0	1300	28	4	CSF00073	
17⅞ 454.0	1550	30	5	CSF00148	CSF00075
19½ 495.3	1250	24	4		CSF00077

Finned Strip Heaters with T4 Terminals

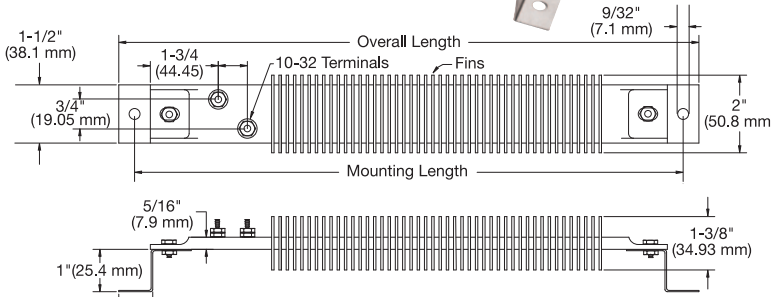
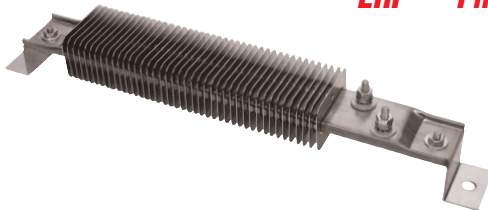
Stock Items Are Shown In **RED**

Length in mm	Wattage	Watt Density		Part Number	
		W/in ²	W/cm ²	120V	240V
19½ 495.3	1700	32	5	—	CSF00080
21 533.4	1900	33	5	CSF00158	CSF00085
23¼ 603.3	1000	15	2	—	CSF00528
23¼ 603.3	1450	22	3	—	CSF00088
23¼ 603.3	2200	33	5	—	CSF00090
25½ 647.7	2400	33	5	—	CSF00094
26¼ 679.5	2500	32	5	—	CSF00100
30½ 774.7	1800	20	3	—	CSF00102
30½ 774.7	2800	28	4	—	CSF00104
33½ 850.9	3150	31	5	—	CSF00180
35⅞ 911.2	2000	18	3	—	CSF00350
35⅞ 911.2	3450	31	5	—	CSF00110
42½ 1079.5	4150	31	5	—	CSF00117

NOTE: Type C – Terminal Box and Type P – High Temperature Quick Disconnect Plug are available. See page 8-6 for details.



EHF — Finned Channel Strip Enclosure Heaters



NOTE: See page 7-41, 9-18 and 11-114 for other type enclosure heaters.

Design Features

- * 10-32 offset screw terminals (T4 style) standard, other terminations available
- * UL recognized component
- * Stainless steel sheath and fins
- * Easy installation with special enclosure mounting brackets

Stock and Standard (Non-Stock) Series EHF Heaters

Stock Items Are Shown In **RED**

Overall Length	Mounting Dimension	Watts	Part Number	
			120V	240V
12.125	11.375	200	EHF00001	EHF00002
15.625	14.875	350	EHF00003	EHF00004
19.5	18.75	450	EHF00005	EHF00006
25.375	24.625	700	EHF00007	EHF00008

Ordering Information

Catalog Heaters

Select a Finned Strip Heater from the Standard Sizes and Ratings lists on pages 8-14 and 8-15.

Finned Strip Heaters whose Part Numbers are in **RED** are available from Stock for immediate delivery.

Standard Non-Stock Part Numbers have a 3-week lead time.

Custom Engineered/Manufactured Heaters

An electric heater can be very application specific; for sizes and ratings not listed, **TEMPCO** will design and manufacture a Finned Strip Heater to meet your requirements. **Standard lead time is 3 weeks.**

Please Specify the following:

- | | |
|--|---|
| <input type="checkbox"/> Type of Application | <input type="checkbox"/> Termination Type |
| <input type="checkbox"/> Length | <input type="checkbox"/> Secondary Bushings (see page 8-13) |
| <input type="checkbox"/> Wattage | <input type="checkbox"/> Igloo™ Ceramic Terminal Covers |
| <input type="checkbox"/> Voltage | <input type="checkbox"/> Power Variation (see page 8-8) |

⚠ WARNING: Cancer and Reproductive Harm - www.P65Warnings.ca.gov.

(800) 323-6859 • Email: sales@tempco.com