

### Standard (Non-Stock) Self-Contained Immersion Heaters

#### Design Features

This immersion heater is specifically designed for commercial dishwashers and sterilizing equipment. However, due to the unique construction characteristics of these heaters, they are readily adaptable for use in other water heating applications. The heating elements are prewired to a Definite Purpose contactor, thermostat and high limit cutout. The thermowell is located at the top of the element bundle for fast shut-off response, preventing overheating due to low water level conditions.

- \* 2" NPT Brass screw plug
- \* Three Incoloy® 800 tubular elements
- \* Thermostat — 60°F (15°C) to 250°F (120°C) range
- \* 350°F (177°C) Over-temperature cutout with manual reset
- \* Internal Definite Purpose contactor with 120V holding coil
- \* NEMA 4 moisture resistant housing
- \* Silicone resin element seal standard



Optional Mounting Kit (Part Number KTT00281) — Clamping nut, flat washer and gasket for mounting heater in thin wall tanks with a 2-3/8" (60 mm) diameter opening.

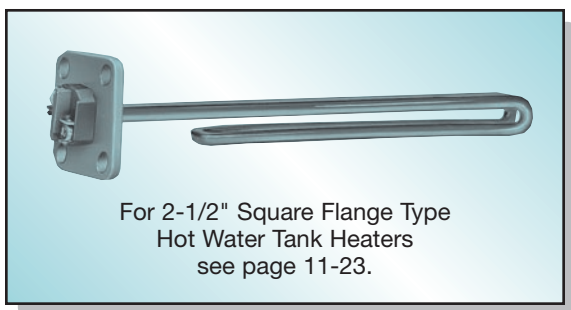
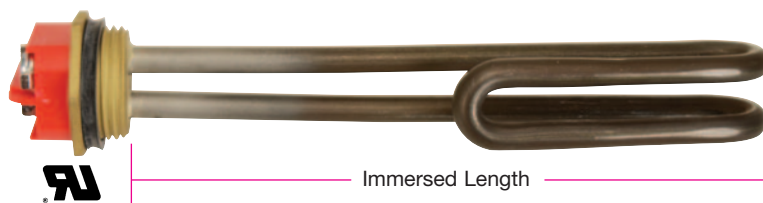
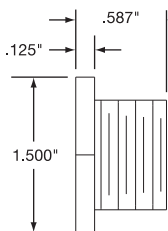
Immersed Length		KW	Part Number					Approximate Net Weight	
in	mm		208-1Ph	208-3Ph	240V-1Ph	240V-3Ph	480V-3Ph	lbs	kgs
13 1/4	333	5	TSP01550	TSP01551	TSP01552	TSP01553	TSP01554	3	1
18 3/4	476	7.5	TSP01555	TSP01556	TSP01557	TSP01558	TSP01559	3	1
23 3/4	606	10	TSP01560	TSP01561	TSP01562	TSP01563	TSP01564	4	2
30 3/4	768	12	—	TSP01566	—	TSP01568	TSP01569	5	2
32 1/2	826	15	—	TSP01570	—	TSP01571	TSP01572	6	3
35 3/4	908	16	—	TSP01573	—	TSP01574	TSP01575	7	3
45 3/4	1162	20	—	—	—	TSP01576	TSP01577	9	4

Standard lead time is 2 to 3 weeks.

### Standard (Non-Stock) General Purpose Hot Water Tank Heaters

#### Design Features

- \* 1"-11 1/2" NPSM Brass Plug with O-Ring gasket (NPT optional)
- \* Incoloy® 800 Tubular Element
- \* 10-32 plated screw terminals
- \* 90°C epoxy seal standard
- \* Optional ceramic terminal block for high temperature applications



Immersed Length		KW	Voltage	Plug Material	Element Configuration	Part Number
in	mm					
8 9/16	218	3.0	208	Steel	Foldback	TSP01200
8 9/16	218	3.0	230	Steel	Foldback	TSP01198
8 9/16	218	3.0	460	Steel	Foldback	TSP01161
10 13/16	275	2.0	230	Steel	No Foldback	TSP01259
10 3/8	264	2.0	460	Steel	No Foldback	TSP01195
12 13/16	325	4.0	230	Steel	Foldback	TSP01324
7 7/8	187	1.5	240	Brass	Foldback	TSP01286
15 7/8	403	4.5	240	Brass	Foldback	TSP01148

Standard lead time is stock to 3 weeks.